

SPRINGBOARD *for the arts*

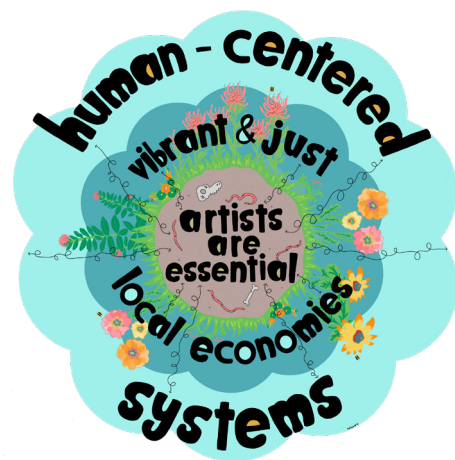


2020-2021 COMMUNITY REPORT

INTRODUCTION

Springboard for the Arts' mission is to support artists with the tools to make a living and a life, and to build just and equitable communities full of meaning, joy, and connection.

Thank you for reading our Community Report, covering our recent work at Springboard for the Arts. At Springboard, our vision is for a future where artists, culture bearers, and creative workers are essential to creating just and equitable local economies and more human-centered systems. These interdependent parts of our vision create an ecosystem of support for culture and creative work. The last two years have been a kind of horrible validation of the need for this ecosystem and the lack of it in many places. More and more, people are understanding the fragility of artists' livelihoods and the compounding emergency of inequity as artists and their communities continue to be impacted by multiple crises.



The last two years have also made clear that in order for communities to benefit from the contributions that artists can make to a more human, equitable, and just future, life as an artist must be more sustainable and more equitable. Springboard's work over the last two years has been focused both on intense amounts of short-term emergency relief, and on developing the longer-term system change we need to alleviate future crises. To help guide us on this path, we developed a new strategic framework for our work and updated our mission statement to better reflect our work.

Amongst this work, we have also honored important milestones for Springboard for the Arts. We entered our 30th year as a nonprofit organization, which is possible entirely because of the creativity, tenacity, and commitment of thousands of artists, volunteers, supporters, mentors, friends, and partners. In 2021, we celebrated the 10th anniversary of our Fergus Falls office. Springboard's work in Fergus Falls and in building resources and opportunities for rural artists has extended our depth of understanding and commitment to finding and illuminating the ways that small towns, rural places, and urban neighborhoods can find commonality and solidarity. Last October, we officially opened our new home on University Avenue in Saint Paul, a hub for artists, community, and creative people power. This space makes so many of Springboard's values tangible and provides us with a new way to support our neighborhood and the many ways that artists and culture bearers can bring people together, make meaning, and create change.

I could not be more grateful to the staff, board, partners, and supporters of Springboard. There are no words for how much your support, investment, and faith in our work mean to me.

Laura Zabel
Executive Director

MISSION

Springboard for the Arts' mission is to support artists with the tools to make a living and a life, and to build just and equitable communities full of meaning, joy, and connection.



VIBRANT & JUST LOCAL ECONOMIES

We seek to create vibrant and just local economies where artists can make a living and a life.



ARTISTS ARE ESSENTIAL

We support, celebrate and develop individual creative practice, cultural traditions and the broader field of artists as meaning-makers, storytellers, creative thinkers and change agents, so that they are recognized and valued as key contributors to healthy, equitable communities.



HUMAN- CENTERED SYSTEMS

Through engaging artists, we aim to change policies and structures so that they are informed by and created to support the needs, assets and health of the people who hold the least amount of power within those systems.



CRISIS RESPONSE



Over the past two years, our communities have faced multiple crises and traumas, including the COVID-19 pandemic, the murder of George Floyd, and the uprising and demand for racial justice. Throughout these crises, art and artists have provided the means to connect, to express grief and joy, to comfort and soothe, and help imagine new and more just futures.

The arts and culture sector has been hit disproportionately hard by the pandemic. People's livelihoods for the year disappeared in a matter of days as performances, commissions, teaching jobs, and other opportunities were canceled. These losses are not only economic but also represent a significant loss of creative work and opportunity. Two years in, the creative sector is coming back more slowly than the economy as a whole and the National Endowment for the Arts reports that the unemployment rate for artists is still twice what it was two years ago.

In the moment of crisis, we had the muscle to react, using our long-standing **Emergency Relief Fund** to raise and distribute dollars to artists, creative workers, and culture bearers in Minnesota. What started as a \$10,000 investment from our general operating funds on March 13, 2020 turned into a fundraiser across the state, and thanks to the generosity of individual donors, foundations, and businesses, to date we have been able to raise and distribute almost \$1.4M to 2,799 Minnesota artists, creative workers, and culture bearers. This would not have happened without people stepping up to see the essential value of artists making a living and a life—thank you!

Springboard also worked to support communities across the country to start their own Emergency Relief Funds. We began by creating and sharing a field guide for starting a Relief Fund that was shared over 900 times, and convening national gatherings on the process and practice of creating Emergency Relief Funds. These calls hosted 172 leaders from around the country, and supported fund distribution to artists nationally. We partnered with Racing Magpie, The Arts Partnership, ImagineMKE, CultureSource, and the CrossHatch Center for Art & Ecology to raise and distribute funds through the Upper Midwest Emergency Relief Fund Coalition. These funds supported 729 artists across the region through locally rooted and relevant processes, demonstrating how connected network hubs can make a big impact by disseminating resources where they are needed most.



In addition to direct relief work for artists, we know that artists needed and wanted to bring their creative skills to address and engage the issues facing their communities. To address urgent community needs, we have supported artists' projects through our **Artists Respond** program. This series builds on our core work of engaging artists in community, and has provided outlets and opportunities for creative action.

Artists Respond: On Plywood supported Black artists in creating messages and responses to the uprisings on University Avenue in St. Paul and hosted community members to engage with and participate in these expressions of grief, rage, pride and hope.

Artists Respond: Combating Social Isolation supported over 80 artists across Minnesota to bring people together and reach vulnerable communities in the depths of the pandemic, supporting outdoor concerts, coloring kits, and zines.

Artists Respond: Equitable Rural Futures brought together a cohort of artists who are Black, Indigenous, and/or People of Color from rural Minnesota to tell their own stories of what it means to live in rural America.

Artists Respond: People, Place, and Prosperity created a cohort of artists in St. Paul to support storytelling and share the impact of Guaranteed Income on residents of the city.

All these projects have brought people together to make meaning and connection during incredibly difficult times and demonstrate the power of artists to bridge difference, imagine better futures and connect us to our neighbors.





“I am so grateful to Springboard for providing this relief fund—not just for myself, but for the health of our community and artists. I’ve been lucky enough to maintain my teaching income during this time, but all my gigs for the foreseeable future are canceled, and my financial plans took a significant hit. Receiving funds has allowed me to stay solvent as we navigate uncertain times.”

– Emergency Relief Fund Recipient

NATIONAL MODELS



Springboard's national work has grown over the past decade, fueled by our commitment to openly sharing toolkits and resources, our expansion of virtual workshops and trainings, and consulting to support other sectors and communities to collaborate with artists. Over the past two years we have expanded our work to take the programs and offerings we've developed in Minnesota so that we can share them nationally, finding new ways to lead the national conversation about the impact of artists.

Part of this work is to ensure that artists are represented in the broader work around economic justice and system change. In April 2021 we launched our **Guaranteed Income for Artists** pilot, supporting 25 artists in the Frogtown & Rondo neighborhoods in St. Paul with \$500 a month in guaranteed income for 18 months. Supported by the McKnight, Bush and Kresge Foundations, our pilot sits alongside the City of St. Paul's People's Prosperity Pilot and is one of the first in the nation focusing on the creative sector. Our goal for this work is to demonstrate the impact of guaranteed income on creative work, local economies, and neighborhood culture and to demonstrate that artists can be powerful partners in movements for economic justice. We also engaged a cohort of artists in the narrative change work around the impact of guaranteed income because we believe that artists should be both participants in and important contributors to these kinds of system change efforts.

"Having a little comfort means I can get back to creating. Before, it felt like I couldn't create unless it was generating income, like I couldn't justify it."

– Guaranteed Income for Artists Pilot Participant

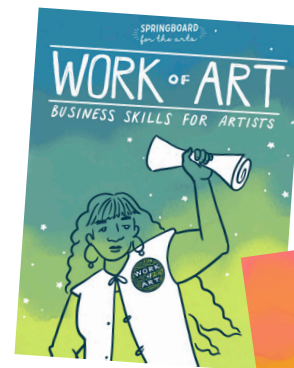
We are in a moment when we urgently need artists, culture bearers, and creative workers who can help us envision and build a future of justice, health and wholeness. And we know that many leaders in public agencies and community organizations would like to collaborate with artists on their work but often don't have the resources or confidence to find and partner with their creative community. To address this need, we are offering **Art-Train**, a national training program developed in partnership with the Center for Performance and Civic Practice. Art-Train offers training for individual artists on how to partner with community members, organizations, and local governments, and offers training to those organizations and government agencies to work with artists. Over 1,100 artists and community leaders have participated in Art Train so far and are working on strategies to help business districts come back to life, change narratives around economic justice, and improve mental health and social connections in their communities.



"I can't thank you enough for the incredible space that is Art-Train! So many groups could benefit from participating because it's so accessible, especially to those new to working with artists, and just need some onboarding to the ways artists can serve communities."

- Geneva Vest, Community Strategies Program Manager, Trust for Public Land

Our national work is rooted in our commitment to make tools for artists that are widely usable, shareable, and replicable, as we strive to create an ecosystem of support for creative people with as few barriers as possible. In 2020, we released an updated version of our core **Work of Art: Business Skills for Artists** curriculum, which has been used in our workshops and replicated across the country. We also launched the **Handbook for Artists Working in Community**, a practical, artist-centered guide for artists to effectively engage in community projects and spark change through their work. These toolkits have been downloaded over 3,500 times over the past 2 years, continuing to expand Springboard's impact across the country.




"I love how they are spiral bound and have water proof, thick covers. Brilliant forethought for getting into messy artist hands or to be near that cup of tea."

- Workbook Reader

In addition to these practical resources, we have also put our energy into making sure that artists and culture bearers are represented in national conversations around relief and recovery.



Executive Director Laura Zabel participated as a member of the Arts Commission of the American Academy of Arts and Sciences, chairing the Arts and Economic Development work that led to the 2021 report *Art is Work*. The report and its policy recommendations for more equitable support for artists and creative workers was the topic of a Congressional briefing and Bloomberg Citylab editorial.



“Change is an act of creation, and that’s what artists do: Through a process of imagining, trying and building, artists create experiences that connect us to our own agency and power. We are in a moment when we urgently need these artists, culture bearers and creative workers who can help us envision and build a future of justice, health and wholeness.”

- Laura Zabel for Bloomberg City Lab

INVESTING IN ARTISTS' WORK

Springboard for the Arts' work has always been about supporting artists with the tools and resources to make a living and a life. These services have filled a particularly critical need over the past two years.

We have continued to deliver workshops, technical assistance, and resources to artists and creative entrepreneurs:

402

WORKSHOPS

10,777

PARTICIPANTS

581

ONE-ON-ONE
CONSULTATIONS

27

ARTIST CAREER
CONSULTANTS

Our workshops and consultations are designed to be as accessible to as many people as possible, often underwritten by partners and donor support so that we can offer these services at low or no cost. Demand for this work has exploded over the last two years, which has demonstrated how precarious the creative economy is, and how necessary it is to include artists and creative businesses in work towards more just economies. We are grateful to have partnered with the Minnesota Department of Employment and Economic Development, Hennepin and Ramsey Counties, and the City of Minneapolis to deliver technical assistance over the past two years.

"I felt empowered and good about my work. I felt affirmation and clear steps in how I want to try and get into the fine art world."

– Artist Career Consultation Review

"Thoroughness, patience, rapport, expertise."

– Artist Career Consultation Review

"I think I just leveled up."

– Handbook for Artists Working in Community workshop participant

“The most effective part was the welcoming and inquisitive connection we were able to develop. The specific aspects of the session that will be very useful were: Them being able to listen for my priorities and reflect them back to me. Specific ideas about where I can develop ways to bring in income, and ideas on the cost of infrastructure pieces that I will need for the future.”

– Artist Career Consultation Review

Springboard continues to find ways to deepen investment in artists across the region. Our 3-year 20/20 Fellowship pilot has evolved into the **Creative Economy Fellowship**, which supports a cohort of artists in Minnesota who are Black, Native, and/or People of Color, recognizing their work building platforms and opportunities for artists. Fellows receive a year-long cohort experience and an unrestricted \$10,000 stipend, which helps support their leadership in our creative ecosystem.



Funded by Bush Foundation, Springboard relaunched the **Creative Community Leadership Institute** in 2019, in partnership with Racing Magpie. CCLI creates learning and connection opportunities for artists, community organizers, and creative leaders across Minnesota, North Dakota, South Dakota, and the 23 Native Nations that share that geography, and we are honored to continue the legacy of this program. Despite the pandemic, the first cohorts were able to be completed virtually and continue on today.

"What I realized was that I am not doing this 'artist' thing wrong in my town/region. This is just what the work is, and it was good to be around folks who were also working in challenging communities, feeling isolated, and being inspired."

- 2021 Rural Regenerator Fellow

We recently celebrated the 10th anniversary of our rural office in Fergus Falls. Building on the last decade of work, we launched a new **Rural Regenerator Fellowship**. This program is helping to support and build networks of rural artists and community leaders across the Upper Midwest. Supported by the Builder's Initiative, this two-year cohort experience expands on our work with the Rural Arts & Culture Summit, and provides Fellows with an unrestricted \$10,000 award to advance the role of art, culture, and creativity in rural development and community building.



RURAL REGENERATOR FELLOWS 2020-22



Back row, L-R: Springboard staff Dominic Facio, Fellows Talon Bazille, Alice McGary, Elisha Marin, Annie Hough, J Erin Hutchinson
Middle row, L-R: Facilitators Jamie Horter, Keith BraveHeart, Fellows Inkpa Mani, Bethany Lacktorin, Springboard staff Michele Anderson, Molly Johnston,
Front row, L-R: Fellows Molly Hassler, Sandra Kern Mollman, Amber Hansen, Mai'a Williams

"I think as artists we all know that at times it's hard to come by authentic and caring individuals and organizations who really want to help artists and communities in the ways that we see and feel passionate about. Thank you for enriching us with this program and via the retreat's empowering programming. I will never forget what this program has done for me and my artistry."

- 2021 Rural Regenerator Fellow



A NEW NEIGHBORHOOD HOME IN SAINT PAUL



On University Avenue in St. Paul, in the Rondo and Frogtown neighborhoods, and just down the street from the Minnesota State Capitol, what was once a vacant used car dealership amid a sea of asphalt has been transformed by artists and community members into a dynamic, welcoming space, and we are so excited to share it with you. The idea for this new home sprouted nine years ago and we acquired the site officially in 2018. The last four years of our capital campaign have been filled with joy and challenges. This project has brought thousands of people and hundreds of organizations into its creation process, and we couldn't be more proud to have our doors open today.

This space reimagines how an unloved and untended space with a history of extraction in the neighborhood can become healthy, generative, and creative. Through our commitment to responsible environmental stewardship, our rooftop deck has innovative, semi-translucent solar panels installed which provide both shade and about 30% of our building's electricity. We have taken the asphalt parking lot and transformed much of it into green space, with a rain garden and a walking path. Our onsite cistern captures runoff water and uses it to maintain the plantings and front yard, and we were honored by our partners at the Capitol Region Watershed District with their 2021 Project of the Year Award.

PUBLIC ART

- Artists Myc Batson and Megan Tate transformed a drab wall into a vibrant, playful mural highlighting creative people power.
- Sarah Agaton Howes, Nedahness Greene, and Holly Young created a Native Presence installation to honor the Dakota and Anishinaabe lands on which we reside and work.
- Ua Si Creative – Ka Ly, Teeko Yang, Christina Vang – worked with artists and elders Sharon M. Day, Louis Alemayehu, Narate Keys, and Aleksandra Gurneau on *Refraction*, an installation on the journey of water throughout the building.
- Blayze Buseth created *Tom's Adventure*, a playful water feature for our rooftop.
- Artists Kao Lee Thao and Ash Kubesh took the old Ford sign, and transformed it into *The Gathering Tree*, a bright sign calling out the creativity of the neighborhood.

We are grateful for the journey,
and thrilled to open the space for
our programs and community use.
Programming on site is up and running,
and we can't wait to share it with you.



OTHER PROGRAMS AND OFFERINGS

Launched *Ready Made*, a platform to highlight local makers and connect them to buyers – shop Minnesota Makers at springboardforthearts.org/ready-made

Hosted *Ask Me Anything* sessions with our Artist Career Consultants.

Offered virtual and in-person residencies with the *Hinge Arts Residency* in Fergus Falls, including the Hannah Kempfer Residency which honored one of the first women elected to the MN State Legislature.

Partnered with Otter Tail County Solid Waste Department to open the *Lakes Area Precious Plastics Lab*, offering new ways for artists to reuse plastic waste.

Continued to host 19 artist mobile tools on the *Ready Go* roster, to offer creative interactions for hire.



Hosted **Saturdays at Springboard** at our St. Paul location, partnering with artists DejaJoelle and Aki Shibata, and organizations Arts Us and TruArtSpeaks to activate our open space and Front Yard.



In partnership with Rethos, facilitated **Artists on Main Street** programs in Bowman, ND, Mahanomen, MN, Cloquet, MN, Two Harbors, MN, and Cook, MN, resulting in hundreds of artist-led projects addressing downtown vibrancy and activity in small towns.



Relaunched our popular **Community Support Art (CSA)** program in 2021, delivering local artists work to people through USPS on the themes of Care, Comfort, and Craft.



Partnered with Trust for Public Land to hire an **Artist Organizer** for Central Village Park. Olga Nichols is working collaboratively with neighbors of Central Village Park, project partners, Summit-University Planning Council, and the City of St. Paul to design, produce, and facilitate community activities and events meant to engage neighbors and build upon community knowledge and experience.

STAFF AND BOARD



Adia Morris Swanger

Program Manager,
Professional Development

I kept my child alive for four years. (And continued to produce creative monologues for Twin Cities

Public Television's Almanac program!)

Al Valdovinos

Office Coordinator

Al uses acrylic and crayon mediums to express scenes of quotidian life around them in paintings and drawings. Al looks forward to learning how to make all resources and information even more accessible to the community around Springboard.



Amanda Cortés

Community Development
Program Manager

I'm grateful and proud that I became a parent to Sixto F. García-Cortés and joined Springboard for the Arts.



Amanda Kaler

Development Director

Co-founded M'AAM!, a trio of makers and mamas collaborating on artist's books, letterpress prints, and motherhood.

We asked staff to share personal, professional, and creative highlights from the past two years!



Andy Sturdevant

Artist Resources Director

My imprint, Birchwood Palace Industries, continues to produce printed ephemera, esoterica, and novelties of the mundane

and fantastic, including new books by Trina Fernandez and Monica Sheets. I also became a father!



Carl Atiya Swanson

Associate Director,
Operations &
Communications

Glad to have navigated parenting in a pandemic, and published poems in

Crooked Arrow Press, Trouble Child Magazine, MEAL Magazine, and with the Hennepin County History Museum. Joined the board of Catalyst Music, supporting all ages venues in the Twin Cities.



Caroline Taiwo

Economic Opportunity
Director

I became an auntie, and that's been wonderful.

Cassie McDuffie

Community Coordinator

I started at Springboard in 2021 and graduated the same year from Metropolitan State University. I am a DJ and Beatmaker born and raised in Saint Paul. Check out my latest album "The Constellation" streaming on all platforms featuring award winning artists from all over the Twin Cities!



Laura Zabel

Executive Director

Pre-pandemic, had the opportunity to play Sarah Weddington, the attorney who argued Roe v. Wade at the Supreme Court in Mixed Blood Theater's production of ROE.



Destiny Davison

Communications Manager

Just glad to be here! First solo art exhibition, "Thanks for Being Here" at the White Bear Center for the Arts, and looking forward to more!



Michele Anderson

Rural Director

Pre-pandemic, I published an op-ed in the New York Times, and brought my baby Ashton into the world. Early in the pandemic, I launched my campaign for State Senate, District 8, and my most recent creative joy was playing keys with the Blue Red Roses at Stella's in Battle Lake.



John Bell

Business Manager

I had a solo exhibition "A Pigeon Year" at ArtStart Rhinelander in 2021.



Molly Johnston

Rural Program Manager

My most recent accomplishments include bringing a 10 pound baby into the world, navigating pandemic preschool, and dancing in the streets of Battle Lake with my organization DanceBARN Collective.



Jun-Li Wang

Associate Director, Programs

Awarded my first competitive grant in 2021, created "Murmuration" with Aki Shibata, an installation of 1200 paper cranes for the Coalition of Asian American Leaders, and helped distribute 750,000 KN95 masks to essential workers in the early days of the pandemic.



Peter Haakon

Thompson

Site Manager

Traveled to 28 different libraries across the state of Minnesota with the Mobile Sign Shop. Helped participants make over 1400 carved, hand painted signs!





Ricardo Beaird

Community Development
Director

I wrote a play!
DOOMSCROLL with MK
and Tia! is a play that follows

two podcast hosts as they fall down a rabbit
hole of online secret societies and internet
conspiracies involving 5G frequency paranoia.
It was presented virtually at the Guthrie
Theatre's Blackness Is Festival.



Zaraawar Mistry

Program Specialist

We kept Dreamland
Arts, our independent
theater, running through
the pandemic, and
just reopened for live
performances!



Sam Buffington

Community Organizer

Created a podcast with my
dad called Revolutionary
Spirits, exploring revolutions
and the spirits that shape

them. Season One focuses on Mexican
revolutionary Francisco Madero.



Dominic Facio

Rural Program Coordinator

I was awarded a Career
Development grant for
screen printing, and an
Minnesota State Arts
Board Individual Support
grant to continue producing

niche events in rural MN. Produced two
Catwalk Party events, and a portrait from my
photograph work was selected for my regional
art council's juried portrait exhibition.

SPRINGBOARD AWARDS

2019

Celebrate Business Success Award
Saint Paul Area Chamber of Commerce

2021

Reader's Recommend Favorite
Arts Organization
Minnesota Women's Press

National Philanthropy Day Award
Association of Fundraising Professionals
Minnesota Chapter

Project of the Year Award
Capitol Region Watershed District

2022

Reader's Recommend Favorite
Arts Organization
Minnesota Women's Press

FY20 BOARD OF DIRECTORS

Amelia Brown, President

Emergency Arts

Greta Bauer Reyes, Secretary

Stinson Leonard Street

Kelly Asche, Treasurer

Center for Rural Policy and Development

Jeremy Cohen, At-Large

The Playwrights' Center

Bo Thao-Urabe

Coalition of Asian American Leaders

Ben Bonestroo

Gray Plant Mooty

Sarina Otaibi

Department of Public Transformation

Andriana Abariotes

Project for Pride in Living

Shannon Pettitt

Ecolab

Maureen Ramirez

Minnesota Department of Employment and Economic Development

Jarrett Reed

Target

Rose Teng

US Bank

FY21 BOARD OF DIRECTORS

Kelly Asche, President

Center for Rural Policy and Development

Greta Bauer Reyes, Secretary

Stinson Leonard Street

Andriana Abariotes, Treasurer

Project for Pride in Living

Shannon Pettitt, At-Large

Ecolab

Jarrett Reed, At-Large

Target

Jeremy Cohen

The Playwrights' Center

Ben Bonestroo

Gray Plant Mooty

Sarina Otaibi

Department of Public Transformation

Maureen Ramirez

Minnesota Department of Employment and Economic Development

Rose Teng

US Bank

Anisha Murphy

Community Reinvestment Fund

Sarah Swedburg

Kandiyohi County & City of Willmar EDC



ARTIST
ORGANIZER

CIVIC
PRACTICE ARTIST

COMMUNITY
ARTIST

CREATIVE

ARTIST

COMMUNITY
WORKER

CULTURE BEARER

CULTURE KEEPER

SOCIAL
PRACTICE
ARTIST

PARTICIPATORY
ARTIST

SOCIALLY ENGAGED ARTIST

PARTICIPATING ARTISTS

SPRINGBOARD ARTIST CAREER CONSULTANTS

Aaron Fiskradatz
Alison Bergblom Johnson
Anika Fajardo
Aziz Kamara
Candida Gonzalez
Cecilia Cornejo
Cynthia Weitzel
Dana Sikkila
David Unowsky
Felicia Perry
Felix Foster
Ifrah Mansour
Jes Reyes
Jessica Lopez Lyman
Ka Oskar Ly
Kaamil A. Haider
Krista Soukup
Laura Youngbird
MaLLy
Naomi RaMona Schliesman
Patricia Zurlo
Patrick Scully
Raymond Rea
Saymoukda Duangphouxay
Vongsay
Sharon Mansur
Tish Jones
Yan Pang

ARTISTS RESPOND: COMBATING SOCIAL ISOLATION

Abby Sunde
Ahmed Anzaldua El Samkary
Alanna Morris-Van Tassel
Alison Bergblom Johnson
Allison Tenney
Alyssa Anderson
Amy Felegy
Anne Labovitz
Anne Pinkerton
Anne Sawyer
Artika Tyner
Asako Hirabayashi
Ashleigh Lambert
Benjamin Kreibich
Bethany Lacktorin
Bonita Goggleye
Brianna Crockett
Briauna Williams
Bryce Davidson
Carolyn Olson
Cedar Thomas
Chris Rackley
Christy Goulet
Cindy Kolling
Colleen O'Shaughnessy
Connie Chang
Dana Sikkila
Dani Prados
Douglas Spartz
Emilia Mettenbrink
Emily Dzieweczynski
Erinn Liebhard
Esther Ouray
Garret Ross
Geno Okok
Hamsa Hassan
Heather C. Lou
Heidi Jeub
Jacob Roske
Jamie Schwaba
Jennifer Kramer
Jessica Eckerstorfer

Joanne Bolles
Joey Clark
John Kellen
Joko Sutrisno
Karen Gray
Karetta Gooch
Kat Purcell
Kathy Stewart
Katie Taylor
Kelly Anderson
Kris Frykman
Lacey Woida
Laurel Armstrong
Madeline Reagan
Madelyn Hartke
Marcela Michelle
Maria Isa Perez-Hedges
Mary Plaster
Marya Hart
Melissa Wickwire
Nancy Cook
Nancy Leasman
Nancy Xiáoróng Valentine
Natalie VanBurkleo-Carbonara
Patrick O'Brien
Peg Churchwell
Phillip St John
Rebecca Merblum
Roshan Ganu
Ryan Evans
Sarah Larsson
Savannah Pemberton
Selena Lerma
Shannon Lucas Westrum
Silvana Agostoni
Snoti Jappah
Stephanie Henry
Susan Smith-Grier
Tara Perron
Thomas Bierer
Tinne Rosenmeier
Tobias Zikmund
Toni Hughes
Vernita Clinton
Yan Pang

ARTISTS RESPOND: EQUITABLE RURAL FUTURES

Mai'a Williams
Joyce LaPorte
Nancy Xiáoróng Valentine
Inkpa Mani
Christy Goulet
Michelle de la Vega

ARTISTS RESPOND: ARTISTS ON PLYWOOD

Alex Smith
Aurum Oro
Canaan Ray-Strong

Geno Okok
Myc Daz
Noval Noir
Seitu Jones
Tony Johnson
Ta-Coumba Aiken
Ua Si Creative

ARTISTS RESPOND: PEOPLE PLACE, PROSPERITY

Briauna Williams
DejaJoelle
Kashimana
Katey DeCelle
Nicole Mary Milligan

COMMUNITY SUPPORTED ART 2021

Arnée Martin
Austin Nash
Blanca Dahlin
Caitlin Warner
Calvin Stalvig
Elizabeth Belz
Jessica Lopez Lyman, Ph.D.
Josephine Everett
Kathy Masterson

COMMUNITY SUPPORTED ART 2022

Azania Tripp
Anika Hsuing Schneider
Deanna Croaker
Heather C. Lou
Jelani Ellis
KOBI
L Kling/Pickle Witch
Margaret Vergara
Nouf Saleh
Sam Zimmerman
Wendy Savage

CREATIVE COMMUNITY LEADERSHIP INSTITUTE 2021

Alex Romero-Frederick
Amanda Cortes
Ana Rusness-Petersen
Angie Stover
Anne O'Keefe-Jackson
Ashley Pourier
Austin Red Dog
Bethany Lacktorin
Brandi Malarkey
Chanda Kraft
Chelsea Steffes
Christopher Bordeaux
Clementine Bordeaux
Dawnee LeBeau
Denise Lajimodiere
Elizabeth Lone Eagle
Focus Smith
Heather Allen
Heather Peebles
Heather Wood
Heidi Jeub
Jada Bell
James Bergman
Janette Yiran
Jeannine Burnette
Jennilee Rooks
Jesus Ramirez
Jonathan Wong
Joshua Rudnik
Kahomy Souksavath
Katarina Hansen
Keith BraveHeart
Kia Lee
Libbie Anderson
Linnea Schluessler
Lydia Four Horns-Powless
Mayumi Park
Micah Eubanks
Micheal Two Bulls
Natalie Stites Means

Nicole Gagner
Rachel Asleson
Rachel Prazak
Rebecca Dallinger
Renee Newton
Sara Lum
Sarah Swedburg
Star Means
Tosa Two Heart
Vynetta A. Morrow
Yvette Reyes

CREATIVE ECONOMY FELLOWS 2020-2021

Amoke Kubat
Atlese Robinson
Ayolanda Evans
Chamindika Wanduragala
Chitra Vairavan
Herb Johnson III
Heather C. Lou
Joseph Allen
Ka Oskar Ly
Maia Maiden

CREATIVE ECONOMY FELLOWS 2021-2022

Adrienne Doyle
DejaJoelle
Duaba Unenra
Garrett McQueen
Kenna-Camara Cottman
María Isa
Marlina Gonzalez
Ricky Collins
Sharon Mansur
Za'Nia Coleman

PARTICIPATING ARTISTS *Continued*

INCUBATOR PROJECTS AS OF JUNE 2021

10th Wave
A 20/20 Life
AC3
Agate Magazine
Al-Bahira Dance Theatre
Alanna Morris-Van Tassel Productions
All St. Paul's A Stage
Alzheimer's Poetry Project
Ambiance Theatre Company
an alleged Theatre Company
Analog Dance Works
Ancia Saxophone Quartet
Anda Flamenco
APIA MN
Arbeit Opera Theatre
Art from the Inside MN
The Artists' Well
Arts Garden
Aspire Music Academy
Autoptic
Aya Collective
B-Sides Art Song Collective
Bill Simenson Orchestra
Black Dirt Theatre
Black Market
Black Women Speak
Breast Cancer Superheroes
Bucket Brigade
Build
Cahoot Physical Theatre
Carlyle Brown & Co.
Catalyst Arts
Cellular Cinema
CENTERPLAY
Chain Reaction Theater Project

The Colu.mn
Comedy Suitcase
Como Pops
Cow Tipping Press
Creating Language Through The Arts
Creative Leadership Studio
Cromulent Shakespeare Company
Dance & Other Behaviors
Dance MN
DanceCO
Dans Askina Turkish Dance
Danza Espanola
Dial Group
Draw By You
DrawingConnections
Dream Lodge
E/D
Emerging Curators Institute
F/10 Photography
Fireweed Community Workshop
FluteSpiration Quartet
Follow the Yellowstone Trail
Fortune's Fool
Four Humors Theatre
Fox & Beggar Theater
Freshwater Theatre
Funny Asian Women Collective
Grace Minnesota
Greenline Mascot Project
Hatch Dance
Haunted Basement
Hinterhands Puppet Company
Holy Cow! Press
Honeywell Concert Band
How to Have Fun in a Civil War
Hypnic Jerk Theatre
Isles Ensemble

Jeffrey Peterson Dance
Kaleena Miller Dance
Karen Sherman
Katie Ka Vang Productions
Kinship of Rivers
LABRADOR Mpls
Ladyslipper Ensemble
Legacy Arts Group
Lightning Rod
Little Lifeboats
Locally Grown Theatre
lumin theater lab
Mad King Thomas
Mad Munchkin
Maggie Bergeron and Co
Make A Scene Scenario Festival
Marine Candlelight Series
Match.Bomb The Musical
Million Artist Movement
Minne Opera Project
Mixed Precipitation
Moonplay Cinema
Morgan Thorson & Co.
Movement Architecture
MOVO SPACE
Neurodivergent Youth Choir
New Epic Theater
North Star Printmakers Studio
On Stage
One Earth United
Opera on the Lake
Opera Reading Project
Orchard Theater Collective
Patrick Scully Productions
Penelope Freeh
Persistence of Vision
Picasso Projects

Playable Artworks
Poetry Asylum
Poetry for People
Points of Light
Praxis Photo Arts Center
Proof Public
Rachel Perlmeter
Productions
RARE Productions
The Recital
Red Bird Theatre
Rondo Family Reunion
Sacred Grounds Coffee
House
Scenius Studio
Second Fiddle
Productions
See Change Treble Choir
See- Saw Theatre Lab
Serpentina Arts Talks
Shift
shOUT
Sigma's Bookshelf
Silver Swan
Sonora Winds
Speaking Out Collective
Spit Take Comedy Series
Strive Publishing
STRONGmovement
Subversive Sirens
Transforming Black Lives
Supergroup
Survival System
Syncopated Silents
T2P2
Tangible Collective
TC Music Therapy
Scholarships
TC Photo
The Performance
Collective
Theatre 55
Theatre Coup d'Etat

Theatre Elision
Threshold Theater
Tlalnepantla Arts
Toot
Transatlantic Love Affair
Trilingua Cinema
Tru Ruts Endeavors
TuckUnder Projects
Turtle Theater Collective
Underground Media Collective

HINGE ARTIST RESIDENCY 2019

Abby Schnure
Andrew Turpening
Amanda Lewis
Austin Turley
Brandi Homan
Eben Kowler
Elyse-Krista Mische
Falcon Gott
Glenda Reed
Laura Korynta
Meg Kirchhoff
Nahshon Anderson
Robert Uehlin
Rosalie Smith
Ryan Evans
Sterling Melcher
Tina Gross

HINGE ARTIST RESIDENCY 2020

Abby Thompson
Alo Osberg
Jaron Childs
Jodi Reeb
Molly Kay Stolz
Nik Nerburn

HINGE ARTIST RESIDENCY 2021

Hassaan Mirza
Laura Korynta
Leila Awadallah
Lindsey Peck Scherloun
Marlys Mandaville
Noelle Awadallah
Pete Driessen
Ranae Lenor Hanson
Susan Smith-Grier
Tori Hong
Wade Underwood
Yan Pang

RURAL REGENERATOR FELLOWS 2021 – 2023

Alice M McGary
Amber Hansen
Annie Hough
Bethany Lacktorin
Elisha Marin
Inkpa Mani
J Erin Hutchinson
Mai'a Williams
Molly Hassler
Sandra Kern Mollman
Talon Bazille

262 UNIVERSITY PUBLIC ART COMMISSIONS

Discover Dope
Kao Lee Thao and Ash Kubesh
Ua Si Creative
Blayze Buseth
Sarah Agaton Howes, Holly Young
and Nedahness Greene
Third Daughter Restless Daughter



FY20 & FY21 ORGANIZATIONAL FINANCIALS

INCOME

FY21

FY20

CONTRIBUTED INCOME (FOUNDATION & GOVERNMENT GRANTS)	\$1,858,923	\$1,626,068
CONTRIBUTED INCOME (INDIVIDUALS)	\$347,074	\$852,904
EARNED INCOME	\$627,386	\$594,663
IN-KIND	\$11,100	\$11,100
TOTAL	\$2,844,483	\$3,084,735

EXPENSES

PERSONNEL	\$1,063,150	\$1,090,771
ARTS & PROFESSIONAL FEES	\$828,558	\$658,527
ADMINISTRATIVE	\$144,147	\$141,501
OTHER PROGRAMS	\$126,034	\$136,195
SPECIAL PROJECTS (INCLUDES EMERGENCY RELIEF FUND)	\$334,640	\$995,515
TOTAL	\$2,496,530	\$3,022,510

These financials accurately represent Springboard's organizational operations, but are not presented in accordance with generally accepted accounting principles. For full audited financials, visit springboardforthearts.org/about-us/financial-overview/

FY20 & FY21 DONORS

July 1, 2019 to June 30, 2021

ORGANIZATIONAL DONORS



This activity is made possible by the voters of Minnesota through a Minnesota State Arts Board Operating Support grant, thanks to a legislative appropriation from the arts and culture heritage fund.

INDIVIDUAL DONORS

Abbie Zahler	Alyssa Fabia	Anna Lee	Barbara Ruhl
Adam Birdsall	Alyssa Herzog Melby	Anne Bertram	Barbara J. Shelton
Adam Pearson	Amanda Lovelee	Anne Kuffel	Becky Bills
Afton Benson	Amanda Tickner	Anne Parker	Becky Heist
Aimee Witteman	Amber Stewart	Anne Peek	Ben Krywosz
Alan Carp	Amber Young	Anne J. Preston	Benjamin Bonestroo
Alan Hastings	Amoke Kubat	Annette Schiebout	Beth Cleary
Alana Horton	Amos Sheldon	Anonymus x 92	Bethany Lacktorin
Alex Rongen	Amy Mathews	Ari Holloway-Nahum	Betsy Roder
Alexander Dewar	Amy Grack Nelson	Art Fluent	Blake Wanger
Alexandra Coe	Andrea Canter	Autumn Amadou-Blegen	Bob Peskin
Alfonso T. Wenker	Andrea Kish	Aviva Breen	Bobbie & Joe Bailey
Ali Lozoff	Andrew Rosdail	Ayumi Hori-Shafer	Bohmann/Riehle Family Fund
Alice Adams	Andrew Taylor	Barbara Gerten	Bonnie Dudovitz
Allen Verbrugge	Andrew S. Troth	Barbara Hovey	Bonnie Goldsmith
Allie Moen Wagstrom	Andriana Abariotes	Barbara Morin	Brenna Owen
Allison Welch	Ann VanBoxtel	Barbara Peterson	Brent & Leigh Anne Adams

FY20 & FY21 DONORS

continued

Brian Beatty
 Brian Zirngible
 Cami Peterson
 Carl Swanson
 Carla Januska
 Carol Bouska
 Carol Patt
 Caroline Bassett
 Caroline Donnelly
 Caroline Marks
 Catherine Lundoff
 Catherine Spengler
 Catherine Thimmesh
 Cedar & Chris Walters
 Celia Swanson
 Chad Nestor
 Chandler Molbert
 Chandra Xiong
 Chris Forsberg
 Chris Osgood
 Chris Polley
 Chris Stapel
 Christina Goldstein
 Christina Waters
 Christopher W. Reedy and Jen Ford Reedy
 Claire Selkurt
 Clark Niederjohn
 Clint Andera
 Colleen Powers
 Constance Mayeron Cowles and Charles Fuller Cowles Foundation
 Cory Schladweiler
 Courtney Backen
 Courtney J. Skinner
 Craig Dunn
 Craig Harris
 Craig Orcholski
 Curt Mackenzie & Timm Caven
 Curtis J. Klotz
 Dan Goettsch
 Dana Nelson
 Dane Stauffer
 Dani Roach
 Daniel Pinkerton
 Daniel Weinkauff
 Danielle Carnito
 Darla Kashian
 David and Leni Moore Family Foundation
 David Chittenden
 David E.
 David Loomer
 David Shannon
 Dawn Doering
 Dean Jensen
 Debra Mortenson
 Debra Serum
 Denise Dreher
 Dennis Cermak
 Dennis Yelkin

Derek Rood
 Derrick Allen
 Dessa Wander
 Diane Cowdery
 Diane Dodge
 Diane & Paul Jacobson
 Dominic Facio
 Dora Lenfestey
 Doreen Schaffhausen
 Drew Digby
 Drew & Sherry Johnson
 Dustin Bethke
 Dwight Cochran
 Edwin McGrew
 Eileen Maler
 Eileen McIsaac
 Eileen Schlentz
 Elaine May
 Eleanor Rosenthal
 Elena Izaksonas
 Elizabeth Athorn
 Elizabeth Crofts
 Elizabeth Horton
 Elizabeth J.
 Elizabeth Klein
 Elizabeth Kreibich
 Elizabeth Mills
 Elizabeth Tisel
 Ellen Gibson
 Ellen Pearson
 Ellen & Mark Smith
 Ellen B. Cutler
 Emily Beaulieu
 Emily Percy
 Emily Vaillancourt
 Emily Jarrett Hughes
 Emma Lopez
 Eric Brook
 Eric Mueller
 Eric Zuccola
 Erik Farseth
 Erik Hagen
 Erik Takeshita
 Erin Simon
 Erin Goedel
 Events By Lady K
 Evonne Bilotta-Burke
 Faith Dohmen
 Feder Gordon Family Fund
 Flannery Clark
 Frank Perkins
 Gavia Charitable Fund
 Gay & Brian Aubin
 Gail Nordstrom
 George Nudell
 George Stevens
 Gerry McGrane
 Glenn Klapperich
 Grant Armour
 Greg Gramza
 Greta Grosch
 H&J Foundation
 Haley Bice
 Hannah K. Holman
 Hawona Sullivan Janzen
 Heather Bernier
 Heather Lou

Heidi Halvarson
 Heidi Ziemer
 Henri Minette
 Imani Martin
 J. Anthony Allen
 Jaime Pedraza
 James Bohn
 James Church
 James McLean
 James Rustad
 James Slusarek
 James & Marcy Nutt
 James P. Lenfestey
 Jamey Flannery
 JamieLyn Reinschmidt
 Jan Gonder
 Jan Rivers
 Jan Scholl
 Janelle Reich
 Janet Bouldin
 Janet Brahier
 Janet Conn
 Janey Winterbauer & Christian Erickson
 Jarrett Reed
 Jason Branton
 Jason Schupbach
 Jay Isenberg
 Jay & Amy Huang
 Jean Silver
 Jeanne Barker-Nunn
 Jeanne Hartle
 Jeff Achen
 Jeff Garske & Katie Reed Family Fund
 Jenna Daire
 Jennifer Nicklay
 Jennifer Schloessmann
 Jeremiah Gardner
 Jeremy Cohen-Elyanow
 Jess Torgerson
 Jesse Peterson-Brandt
 Jessica Larson
 Jill Swanson
 Jim Hanson
 Jim Tenbenschel
 Jim Parker
 Jo Ann Musumeci
 Joan Bibelhausen
 Joan Ireland
 Joanna Coyle
 Jody Williams
 John Akre
 John Lukach
 John Munson
 John Toren
 John L. Harrison
 Johniver Family Charitable Fund
 Jonathan Cook
 Joseph Novak
 Josephine A. Geiger
 Josh Leventhal
 Joshua J. Schmidt
 Joyce Lasecke
 Juan Chanco
 Julia Ruth
 Julian Robles

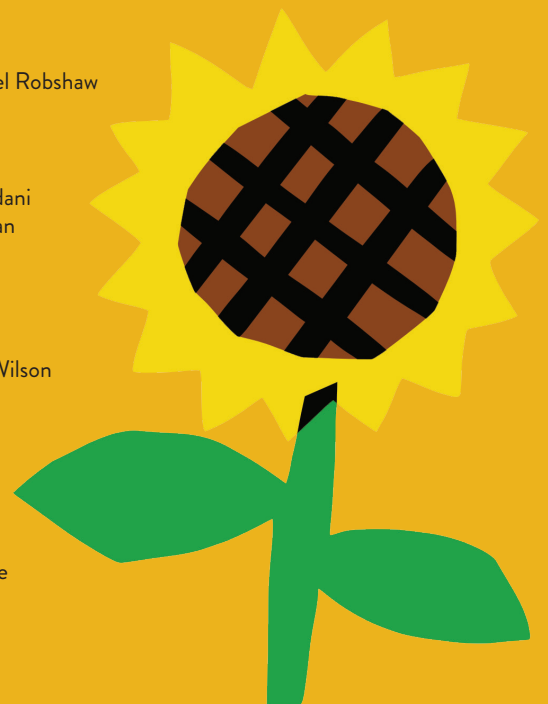
Julie Cohen
 Julie Fredrickson
 Jun-Li Wang
 Kao Lee Thao
 Karen Gahl-Mills
 Karen Gjerstad
 Kari O'Connor
 Karl Jones
 Karl Smith
 Karla Larsen
 Kate Barr
 Kate Lucas
 Katharine Freeman
 Kathleen Lindblad
 Kathryn Nettleman
 Kathryn Wetzel-Mastel
 Kathy Mouacheupao
 Katie Herron Robb
 Katie Hey
 Katie Reed
 Katie Hae Leo
 Kayleigh Baker
 Keith Clark
 Keith Martinsen
 Kelly Lamphear-Dash
 Kelsey Daly
 Kemi Ilesanmi
 Kendra Plant
 Kerry Keen
 Kevin Brown
 Kevin Somdahl-Sands
 Kevin T. Houle
 Kiell Kosberg
 Kirsten Jaglo & Michael Graven
 Kjolhaug Environmental
 Kristen Olsen
 Kristen Pichette
 Kristin Swanson
 Kristin & Justin Schaack
 Kristine Revak
 Kurt Froehlich
 Kurt Meyer
 Lara Fedorov
 Laura Daugherty
 Laura Nortwen
 Laura Salveson
 Laura Vincent
 Laura M. Johnson
 Laura Zabel & Levi Weinhausen
 Lauren Benditt
 Lauren Hildebrand
 Lauren Sheibley
 Laurie Brickley
 Laurie Hertzell
 Laurie Miller
 Lawrence Krantz
 Lawrence McDonough
 Lee Clausen
 Lee Henderson
 Lee Samelson
 Leigh Dillard
 Lena Dunham
 Libby Kain
 Lily Shaw
 Linda Brooks
 Linda King
 Linda Sue Anderson

Lindsay Bacher
 Lindsay Pederson
 Lindsey Dickinson
 Lisa Borneman
 Lisa Deutsch
 Lisa Meyer
 Lisa Middag
 Lisa Pettitt
 Loftus Family Fund
 Lori Tanner
 Lori & Ron Perlman
 Lotts Tax and Accounting
 Services, Inc.
 Louisa Sauro
 Lucas Erickson
 Lyman Warren
 Margaret Lee
 Marguerita Tajibnapis
 Marguerite Brunner
 Maria Signorelli
 Maria Steen
 Maria J. Bianchi
 Marie Prottengeier-Smith
 Marie & Rod Nordberg
 Marilyn Thompson
 Marilyn Erickson
 Mark Dreyer
 Mark Henderson
 Mark MacLennan
 Mark Taylor
 Mark and Jackie Nolan Family
 Fund
 Marla Siegler
 Martin G. Ludden
 Martinsen Family Fund
 Mary Burns-Klinger
 Mary Croft
 Mary Dwyer
 Mary Hill
 Mary Jordan
 Mary Lewis
 Mary Malherek
 Mary Mikelthun
 Mary Morris
 Mary Sabatke
 Mary Vasterling
 Mary Anne Linser
 Mary K. Weinhausen
 Mason Family Fund
 Mathieu Lindquist
 Matthew Spector & Lisa Griffin
 Vincent
 Maureen Ramirez
 Maureen Smith
 McNeely Foundation
 McTeer Giving Fund
 Meg Forney
 Megan Preuss
 Megan Kaplan
 Melanie Johnson
 Meredith Dillman
 Meri Golden
 Meyer-Grimberg Charitable
 Fund
 Michael Fischbein
 Michael Fury
 Michael Madden

Michael Orth
 Michael Ricker
 Michelle Parks
 Mike Gotter
 Mike Skoglund
 Milly Theis
 Miranda Adams
 Miriam Shapiro
 Misha Dashevsky
 Molly Burke
 Molly Chase
 Molly Maher
 Morgan Clifford
 Nancy Fushan
 Nancy Glades
 Nancy Haaheim
 Nancy Moskop
 Naomi RaMonna Schliesman
 Nate Ehrlich
 Nathanael Chan
 Nausheena Hussain
 Neal Breton
 Neely Heubach
 Nic Baker
 Nicole Wood
 Nikki Hunt
 Nina LeSaout
 Nor Hall
 Outsell Corporation
 Pam Schmitz
 Patricia Seflow
 Patrick Pfundstein
 Paul Dickison
 Paula Guinn
 Paula Vesely
 Peg Guilfoyle
 Peggy Audley
 Penelope Snipper
 Penny A. Petersen
 Peter Akimoto
 Peter Carlson
 Peter Thoreen & Janet Marshall-
 Thoreen
 Phillip A.
 Polly Talen
 Priscilla Siow
 Priscilla Thomas
 Qureshi Na
 Rachael Hanel
 Rachel Flynn
 Rachel Levitt
 Rachel Manser
 Randal & Nancy Baker
 Raymond D. Terrill
 Rebecca Saltzman
 Rene Meyer-Grimberg
 Richard Hruby
 Richard Parnell
 Richard Schara
 Richard Todd
 Rick Baker
 Rita Lee
 River Road Foundation
 Riverbridge Partners
 Rob Clapp
 Robert Chouinard
 Robert Kent

Robert Mack
 Robert Malos
 Robert Manske
 Robert Raymond
 Robert Weidman
 Robert and Mary Kay Zabel
 Robert K. Everest
 Robin Stramp
 Robyn Johnson
 Rochelle Kohler
 Rod Betsch
 Ronnie Brooks
 Rosanne Swanson
 Rose Teng Scheckman
 Rosemary & David Good
 Roxanne & Stanley Friesen
 Sally Sand
 Sam Bergman
 Samuel Burgin
 Sandry and Wersan Family Fund
 Sara Church
 Sara Myszka
 Sara Tyler
 Sara Wilson
 Sarah Beuning
 Sarah Gleason
 Sarah Lockwood
 Sarah Tillemans
 Sarah & Tom Borger
 Sarah Ann Brennecke
 Sarina Otaibi
 Scott Johansen
 Scott Legere
 Scott Schanzenbach & Robert
 Canham
 Shannon Pettitt
 Sheila Oliver
 Shelley & Michael Robshaw
 Shelli Place
 Sheri Holm
 Shirley Flom
 Shona Ramchandani
 Sieglinde Gassman
 Stephen Seidel
 Steve Dietz
 Steve Pyan
 Steve Suppan
 Steve & Cathie Wilson
 Steven Bergseth
 Steven Johnson
 Steven Wright
 Stu Janis
 Subbu Sastry
 Sumayyah Beck
 Summer Osborne
 Susan Campion
 Susan Elsner
 Susan Gonzalez
 Susan Haugh
 Susan Lenfestey
 Susan Mohs
 Susan Schuster
 Susan Searing
 Suzan Klein
 Suzanne Edwards
 Suzanne Olson
 Sydney Urban

Ta-coumba Tyrone Aiken
 Terrance Schmit
 Terri Nelson
 Terry Shima
 Theresa Casey-Wolf
 Theresa Swaney
 Thomas Burke
 Thomas Ducker
 Thomas Marrinan
 Thomas Vetter
 Thomas R. Loftus
 Tim Owen
 Timothy Gardner
 Timothy Johnson
 Timothy Kramer
 Timothy Nelson
 Tom Odendahl
 Tom Pfannenstiel
 Tori Lund
 Tressa Hills
 Twyla Anderson
 Tyler Olsen
 UBS Financial Services Inc.
 Vince & Paula Granquist Fund
 Vincent King
 Vivian Poon
 Wendy Knox
 William Beeman
 William Dow
 Younsu Jung
 Youthprise



EMERGENCY RELIEF DONORS

March, 2020 to December 31, 2021

A Simso Dean
Aaron Christofferson
Abbie Zahler
Abby Kocher
Abby Taylor
Abigail Ronner
Abraham Sweet
ActBlue
Adam Krinsky
Adam Smerud
Adrian Noble
Aimee Kuzenski
Aisha Formanski
Alejandro Eduarte
Alexandra Hatch
Ali Lozoff
Alice Madden
Alinda Stanley
Alison Edwards
Alissa Jordan
Allana Olson
Allison Kotzig
Allison Locey
Allison Mears
Allison Sawyer
Allison Vallant
Alycia Anderson
Alyssa Lochner
Amanda Jacobson
Amanda Lovelee
Amber Benavides
Amber Ovaska
Amelia Brown
American Composers Forum
Amy Braford Whittey
Amy Fladeboe
Amy Hyatt
Amy LaFrance
Amy Patiuk
Amy Rea
Amy J. Hubbard And Geoffrey

Kehoe Fund
Ana Kaveh
Andi Mickle
Andrea Albright
Andrea Anastasi
Andrea Brown
Andrea Echelberger
Andrea Gross
Andrea Tonsfeldt
Andrea S Herman
Andrew Davis
Andrew Hestness
Andrew Tinkham
Andrew J Kueppers
Andriana Abariotes
Andy Droel
Andy Sturdevant
Angela Benson
Angela Ericson
Anil B Hurkadli
Anitra Budd
Ann Huidekoper
Ann Klemz
Ann Smith
Ann Wilcox
Anna Lee
Anna Min
Anna Zaros
Anne Parker
Anne Peek
Anne Elstrom & Rand Park
Anonymous x 438
Anthony Mendoza
Anton Schieffer
April & Mark Siekmeier
Ariane Kokes
Ariella Tilsen
Arleta Little
Aroha Philanthropies
Arrowhead Regional Arts Council
Ashley Hanson
Ashley Mary
Ashwini Ramaswamy
Audrey Meyer
Audrey McClellan
Bao Phi
Barb Hovey
Barbara Coyle
Barbara Freeman
Barbara Lind
Becky Flanders
Becky Hampton
Becky Heist
Becky Lang
Ben Fernlund
Ben Holland
Ben Krywosz
Ben Marcy

Ben Owen
Beth Bergman
Beth Johnson
Beth Kruse
Beth Richardson
Beth Sowden
Beth Wertanen
Bethany Whitehead
Betty Lotterman
Betty Tisel & Sarah Farley
Bill Corbett
Bill Hefner & Julie Rohovit
Bjorn Bjornson
Blake Bolan
Blayne Buseth
Bluestem Fund
Bo Thao-Urabe
Bohmann/Riehle Family Fund
Brandon Boat
Brandon Novy
Brenda Butler
Brenda Kayzar
Brenda Masak
Brenda Owens
Brenda Simon
Brenna Brelie
Brent Carlson
Brian Hebner
Brian Hutchins
Brian Moen
Brian Vats-Fournier
Brian Walters
Briana Gruenewald
Brianna Kocka
Brigid Riley
Brooke M
Bruce Morrison
Bruce Pomerantz
Bryna Schmidt
Burk Charitable Fund
Burke Daneman
Bush Foundation
Byron Hanson
C M
Cady Rutter
Caitlin Helms
Caitlin Warner
Camille Fleuriault
Carl Schroeder
Carl Atiya Swanson
Carla Steen
Carmen Christy
Carol Ashwood
Carol Barnett
Carol Daul Elhindi
Carol Harvatin
Carol Jackson
Carol Roth

Caroline Povolny
Caroline Royce
Caroline Schwert
Carolyn Briol
Carrie Coffey
Carrie Johnson
Carrie Pomeroy
Carrie Thompson
Cass/Barrere Action Fund
Cat Hammond
Catherine Baldwin
Catherine Gasiorowicz
Catherine Higgins Whiteside
Catherine Lundoff
Catherine Przybylski
Catherine Saumur
Cecelia & Arun Caspram
Chanelle Peterson
Charissa Uemura
Charles Ritt
Charles Campbell & Susan McKinnell
Charlotte Hecht
Cheryl Saterstrom
Chillon Leach
Chris Dall
Chris Smalley
Chris Stapel
Chris Vanecek
Chris & Laurie Kemp
Chris & Sue Eidem
Christi Hansen
Christian Knox
Christin Light
Christina Waters
Christine Baeumler
Christine Demars
Christine Hoffman
Christine Johnson
Christine Noonan
Christine Novotny
Christine Sarkes
Christine Taffe
Christine Weeks
Christine & Tim Stanton
Christopher Osgood
Chuck Olsen
Cindy Angerhofer
Cindy Stahnke
City Of Minneapolis
City Of Saint Paul
Claire Colliander
Claire Halpert
Claire Lachance
Claire Lewis
Claire Maccani
Claire Thoen
Clare Croft



Clarence Falk
Clayton Jelinek
Clint Andera
Clockwork Matching
Colleen Palmer
Colleen Pollack
Colleen Powers
Colleen Carey & Pam Endean
Corinne Kuhlmann-McHie
Craig Carnahan
Craig Freeman
Cristiane Franchevich
Cuyler Dinegan
Cy Dodson
Cynthia Niederjohn
Cynthia Pratt
Cynthia Weitzel
Cyrus Collier
Dana Amdahl
Dana Kassel
Dana Mattice
Dana Nelson
Daniel Donkers
Daniel Jolly
Darcy Smith
Darin Rowles
Darla Kashian
Dave Dieken
David Amdur
David Aquilina
David Carter
David Draeger
David Feldmann
David Gumlock
David Hoppenrath
David Lefkowitz
David Lothner
David Murphy
David Naughton
David Pace
David Pacheco
David Schultz
David Young
David and Leni Moore Family
Foundation
David & Mary-Suzanne Lamkins
Dawn Mikkelsen
Dawn Rossbach
Deanna Gulliford
Deborah Cushman
Deborah Jewett
Deborah Perry
Deborah Zanish
Debra Barnes
Debra Denoyelles
Delta Giordano & Allen Sabeau
Deneane Richburg
Denise Clemen
Denise Culshaw
Dennis Feltz
Derek Reise
Destiny Munoz
Diana Albrecht
Diana Neidecker
Diana Voges
Diane Aldis
Diane Benjamin

Diane Krech
Diane Ragsdale
Diane Tran
Dianne Ginsberg
Distracted Globe Foundation
Dominic Facio
Dominick Washington
Don Darnutzer
Don Lorr
Don't You Feel It Too?
Dorothy Grinolds
Douglas Freeman
Drew Davis
Drew Digby
Drew Miller
Dylan Hicks
Ed Lubinski
Eden Lehr
Edith Lotterman
Edward & Donna Kraus
Edwin McGrew
Eileen Bohn
Eileen Maler
Eileen McIsaac
Elaine Grittner
Elana Schwartzman
Eleanor Savage
Elena Gustafson
Elisa Cross
Elisabeth Williams
Elissa Adams
Elizabeth Athorn
Elizabeth Buckingham
Elizabeth Ellsworth
Elizabeth Giffin
Elizabeth J
Elizabeth Lorton
Elizabeth Madaus
Elizabeth Miller
Elizabeth Sheets
Elizabeth Smith
Elizabeth J Tisel
Elizabeth J. Andrew & Emily
Jarrett Hughes
Ella Kampelman
Elle Thoni
Ellen Gibson
Ellen Ingolfsland
Ellen Stanley
Ellie Zwart
Elliot Douma
Elliott Payne
Emer Griffin
Emilia Seay Allen
Emily Gastineau
Emily Gustafson
Emily Lindholm
Emily Percy
Emily Rosenberg
Emily Shaftel
Emily Slaubaugh
Emily Vergin
Emily Olmsted Morales
Emma Bohmann
Eric Berglund
Eric Hageman
Eric Haugee

Eric McEnaney
Eric Schned
Erica Shearer
Erik Lindell
Erika Neely
Erin Heelan
Erin McHenry
Erin Oberdorfer
Erin Que
Erin Rohne
Erin Simon
Erin Swenson-Klatt
Erin Thompson
Erin Tressler
Erin Vork
Erinn K Liebhard
Ernesto Capello
Ethan Nuss
Evan Flom
Evelyn Pugh
Farrand Anderson
Feder Gordon Family Fund
Forecast Public Art
Fran Hutchins
Francesca Socki
Gabriel Steller
Gail Harless
Gale Eichhorst
Gary Deutsch
Gary Dion
Gen & Nate Rantala
George Koch
George Maurer
George Nudell
George Steitz
Geri Sullivan
Giesla Hoelscher
Gillian Martin
Ginger Wilhelmi
Glenna Olson
Grace Pesch
Grace Riley
Grant Meachum
Grant Rykken
Gregory Martinson
Gudrun Morgen
Hailey & Ben Passer
Hal Schroer
Halley Norman
Haney/Moore Family Fund
Hanna Schutt
Hannah Clark
Heather Janes
Heather Ripplinger
Heather Turngren
Heidi Jedlicka Halvarson
Heidi Schallberg
Heidi Traore
Heidi Wendling
Heidi Ziemer
Helen Booth-Tobin
Herbert Winslow
Herve Teinturier
Hettie Stern
Holly Bolstad
Holly Johnson
Holly Menninger



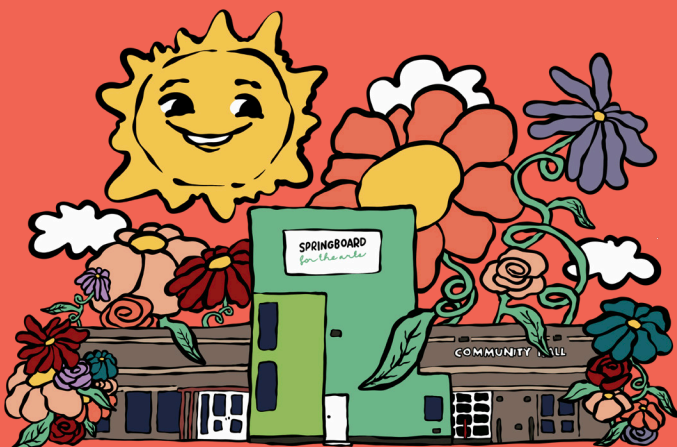
Holly Sidford
Hugh J. Andersen Foundation
Ian Adams
Intermedia Arts
J W Petkau
J. Anthony Allen
Jabari Jones
Jack Becker
Jacob Blumberg
Jacob Johnson
Jacob P
Jacob Rorem
Jade Tittle
Jaime Pedraza
Jake Blumberg
James Fornell
James Hafferman
James Hewitt
James Pfau
James Rustad
James Sauder
James A. Payne Fund
James B. Proman
Jamie Fuller
Jamie MacPherson
Jamie Marshall
Jamie Millard
Jan Anderson
Jan Campbell
Jan Rivers
Jan Scholl
Jane Confer
Jane Newman & Amy Lange
Janelle Beitz
Janelle Soderlind
Janet Hayman
Janet Huyck
Janet Myers
Janet L Bailey
Janice Klimek
Janice Lokken
Janis & David Weller
Janne Gossman
Jarrett Reed
Jasmine An
Jason Buranen
Jason Partridge
Jason Schupbach
Jay Senensky
Jay & Page Cowles

Jeanne Barker-Nunn
 Jeanne Blaskowski
 Jeanne Shields
 Jeanne Cornish
 Jeff Achen
 Jeff Digre
 Jeff Orcutt
 Jeff Perry
 Jeff & Lisa Given
 Jeff Garske & Katie Reed Family Fund
 Jeffery Alspaugh
 Jeffrey Rundgren
 Jelena & Joe Song
 Jen Dolen
 Jen Krava
 Jen Tudor
 Jenni Oprosko
 Jennifer Gascoigne
 Jennifer Marshall
 Jennifer McNertney
 Jennifer Nicklay
 Jennifer Probst
 Jennifer Racho
 Jennifer Schwartz
 Jennifer Young
 Jenny Holm
 Jeremy and Michael Cohen-Elyanow
 Jeremy Messersmith
 Jeremy Szopinski & Erin Bowley
 Jerome Foundation
 Jerry Gilman
 Jerry Reck
 Jerry & Judy Hunt
 Jerry Evan Kelley
 Jes Reyes
 Jessi Wyatt
 Jessica Fiala
 Jessica Franken
 Jessica Turtle
 Jessica Zoe Benston
 Jesus Reyes
 Jill Galstad
 Jill Gunderson-Gernes
 Jill Kittock
 Jill Moe
 Jill Schafer
 Jillian Hiscock

Jim Dunlap
 Jo Zimmermann
 Jo Ann Musumeci
 Joan Bibelhausen
 Joan Safford
 Joan Bechtold & Brian Balleria
 Joanne Brockington
 Joanne Gordon
 Joanne Jongsma
 Joanne Rust
 Joanne Sylvander
 Jody McCormick
 Joel Abrahamson
 Joel Leviton
 Joel Weisberg
 Johanna Lorbach
 John Burke
 John Gunyou
 John Harrer
 John Hermanson
 John Munson
 John Sessler
 John Thomas II
 Jon Gonia
 Jon Lewis
 Jon Skaalen
 Jon Christian Dahlager
 Jonathan Daniel
 Jonathan Kaiser
 Jonathan Oppenheimer
 Jonathan Tallman
 Jonathan Waldo
 Jonathan Wittman
 Jonathan and Jill Eisenberg
 Family Fund
 Joni Van Bockel
 Jordan Yasmineh
 Joseph Bartmann
 Joseph Marty
 Joseph & Molly Reinemann
 Josephine Geiger
 Josh Cisewski
 Josh Keegan
 Josie Axness
 Joy Rikala
 Juan Fried
 Judith Haaversen
 Judith Herr
 Judith Roy

Judy Bakken
 Judy Bearman
 Julia Ruther
 Julie Anderson
 Julie Carson
 Julie Corty
 Julie Doberstein
 Julie Luger
 Julie Mattson
 Julie Meyer
 Julie Page
 Julie Rohovit
 Julie Stonehouse
 Julie Andrus Fund
 Juline Chevalier
 Julka Almquist
 Jun-Li Wang
 Justine Selsing
 K Scott And Mary Ann Portnoy
 Family Fund
 Kaitlyn Mellini
 Kaitlyn Worner
 Kam Evenson
 Kara Johnson
 Kara Maloney
 Karen Farber
 Karen Greene
 Karen Norum
 Karen Pedersen
 Karen Peters
 Karen Reid
 Karen Rudrud
 Karen Sande
 Kari O'Connor
 Karin Groening
 Karl Erickson
 Karla Larsen
 Karla McCall
 Karsten Piper
 Kasey Ross
 Kate Barr
 Kate Havelin
 Kate Knuth
 Kate Suchomel
 Katharine Horowitz
 Katharine Tyler
 Katherine Ashby
 Katherine Dalager
 Katherine Dillon
 Katherine Pardue
 Katherine A. Hanson
 Katherine Austin Mahle
 Kathleen Blair
 Kathleen Dodge
 Kathleen Kvern
 Kathleen Milner
 Kathleen Park
 Kathleen S. Bray
 Kathryn Houston
 Kathryn Wiebe
 Kathryn Yuill
 Kathy Dummer
 Kathy Hanson
 Kathy Parkin
 Kati Medler
 Katie Agnew
 Katie Anthony

Katie Dierkes
 Katie Jerome
 Katie Marshall
 Katie Selby
 Katie Sisneros
 Katie Hae Leo
 Katie Ka Vang
 Katrina Rudisel
 Katy Lindblad
 Katy McFall
 Kay Smith
 Kay Thomas
 Kayla Martin
 Keira Conkling
 Keith Jensen
 Kelly Hazel
 Kelly O'Brien
 Kelsye Gould
 Kenneth Justich
 Kenny Devine
 Kent & Elke Knopp-Schwyn
 Kerry Morgan
 Kerry Walsh
 Kevin Duffy
 Kevin Somdahl-Sands
 Kevin & Terri Frazell
 Kevin T. Houle
 Kim Balkcum
 Kimberly Zamora Pearson
 Kirstine Rosenmeier
 Korla Masters
 Krista Pearson
 Krista Weiss
 Kristen Brogdon
 Kristen Milner
 Kristin Ferrier
 Kristin Kewitsch
 Kristin Majkrzak
 Kristin Makhholm
 Kristin Thompson
 Kristina Clark
 Kristina Schlosser
 Kristine Iten
 Kristine Fowler
 Kristine M Egerman
 Kurt Froehlich
 Kyle Thomas
 Kylie Nicholas
 Lake Superior Art Glass Duluth, Mn
 Larry Benoit
 Lars Leafblad
 Laura Bauhof
 Laura Doty
 Laura Lindsay
 Laura Migliorino
 Laura & Luther Salveson
 Laura M Wiesner
 Laura Zimmerman and Lee Zukor
 Laurel Stiebler
 Lauren Anderson
 Lauren Benditt
 Lauren Melcher
 Lauren Peck
 Lauren Warfield
 Lauri Appelbaum
 Laurie Sweeep
 Lawrence A Kraft



Lebowski Urban Achiever Fund
 Lee Clausen
 Leif Brostrom
 Len Powell
 Leo Stephen Borer
 Leslie Wander
 Levi Weinhagen and Laura Zabel
 Lewis And Kathy Sandy
 Charitable Trust
 Lillian Egner, The Foundry
 Home Goods
 Lincoln Scully
 Linda Brooks
 Linda Comb
 Linda Dicks
 Linda Fei
 Linda Goughnour
 Linda Holford
 Linda McCollough
 Linda Otteson
 Linda Passon-McNally
 Linda Seidel
 Linda Sue Anderson
 Lindsay Bacher
 Lindsay Hall
 Lindsay & Zach Kacey
 Lindsey Graff
 Lisa Brownell
 Lisa Meyer
 Lisa Roe
 Liz Ziegler
 Liz & Xakk Asphodel
 Logan Carter
 Lori Erickson
 Lori Halbur
 Lori Klongtruatroke
 Louise Chalfant
 Lucas Erickson
 Lucille Decoux
 Lucy Comer
 Lucy Hiestand
 Lukas Skrove
 Luke McKenty
 Lynn Fleming
 Lynn Speaker
 Maddy Buck
 Maddy Javorina
 Madison Belka
 Mairs & Power, Inc.
 Maiya Grath
 Makenzie Flom
 Mandy Tizon
 Mandy Whiteside
 Marc & Linda Daneman
 Marcia Dietz
 Marcy Hiltner
 Margaret Dayton
 Margaret O'Neill
 Margaret Winchell
 Margaret & James Wirth-
 Johnson
 Margaret A Cargill Foundation
 Employee Matching Fund
 Margie Grilley
 Marguerite And Donald L.
 Harvey Family Fund
 Maria Finke

Mariana Shulstad
 Marie Moeller
 Marilyn Teskey
 Marjorie Kelly
 Marjorie Pearson
 Mark Bietz
 Mark Kooiker
 Mark Nelson
 Mark Seeley
 Mark Swanson
 Mark & Norma Olson
 Mark Traynor & Jen Peterson
 Marlon Amaro
 Marshall-Thoreen Family Fund
 Martin Dosh
 Martin Ludden
 Mary Belisle
 Mary Bren
 Mary Dwyer
 Mary Hirsch
 Mary Jordan
 Mary Keepers
 Mary Lewis
 Mary Mehsikomer
 Mary Minnick-Daniels
 Mary Mullen
 Mary Palmer
 Mary Phelps
 Mary Pow
 Mary Radtke
 Mary Spear
 Mary T'Kach
 Mary Vasaly
 Mary & David Miklethun
 Mary Ann Bazile
 Mary K Dew
 Mary K Weinhagen
 Mary Kay and Robert Zabel
 Mary Lou Logsdon
 Maryann Weidt
 Maryanne Simonitsch
 Masanari Kawahara
 Matt MacInnes
 Matt Mason
 Mattan Comay
 Matthew Fetbrandt
 Matthew Fritts
 Matthew Olson
 Maura Fitzgerald
 Maura Rivard-Hoster
 Maureen Dollase
 Maureen Hoeffler
 Maureen Perry
 Maureen Smith
 May Lee-Yang
 McKnight Foundation
 Meg Duhr
 Megan Press
 Meghan Nelson
 Meghan Stevens
 Melanie Gomez Mejia
 Melinda Marsolek
 Melissa Cummings
 Melissa Wray
 Melody Gilbert
 Meri Golden
 Merjent Foundation

Merrra Young
 Metropolitan
 Regional Arts
 Council
 Meyer-
 Grimberg
 Charitable Fund
 Mia Divecha
 Mia Pallazza
 Michael
 Anderson
 Michael
 Casserly
 Michael Darger
 Michael
 Hallenbeck
 Michael
 Hartford
 Michael Hurd
 Michael Larson
 Michael Rohd
 Michael Smith
 Michael Zimmerman
 Michele Anderson
 Michele Marrinan
 Michelle Baker
 Michelle Klein
 Michelle Wiersgalla
 Michelle Woster
 Mike Gotter
 Mike MacDonald
 Mike McGuire
 Mike Noble
 Mike & Laura LaFave
 Mikki Tuohy
 Minneapolis Foundation
 Minnesota Disaster Relief Fund
 Minnesota Jewelry Arts Guild
 Miriam Must
 Miriam & David West
 MJ Korsmo-Stroup
 Moira Webster-Larranaga
 Molly Hale
 Molly Jones
 Molly Leutz
 Molly Maher
 Molly Malchert
 Monica Murray
 Monica Nadal
 Monica Sheets
 Morgan Appleberry
 Mortenson Family Foundation
 MySphera
 Nahid Khan
 Nancy Anderson
 Nancy Baker
 Nancy Frick
 Nancy Fushan
 Nancy Lyons
 Nancy Molenda
 Nancy Nordgren
 Nancy Parlin
 Nancy Valentine
 Nastalie Bogira
 Nathan Dungan
 Nathan O'Malley
 Neil Waingrow



Nick Cotta
 Nick Judkins
 Nick Zelle
 Nickie Kromminga Hill
 Nicky Torkzadeh
 Nikki Hunt
 Nikole Griffin
 Nina Ebbighausen
 Nina Robinson
 Nor Hall
 Nora Leisk
 Nora Riemenschneider
 Nora Hart McInerny
 Norma Jean Falink
 Olausen Charitable Trust
 Otis Godfrey
 Owen Brafford
 Pam Krank
 Pam Schmitz
 Pamela Lohr
 Pamela Parker
 Pamela Standing
 Pamela Vermeer
 Parvoneh Shirgir
 Pat Thomas
 Patricia Baehler
 Patricia Seflow
 Patricia A Canney
 Patrick and Aimee Butler
 Family Foundation
 Patricia S Baehler
 Patrick Gustafson
 Patrick Jones
 Patti Brase
 Patty Malaney
 Patty Voje
 Paul Clausen
 Paul Durrant
 Paul Ehresmann
 Paul Fiore
 Paul Gempler
 Paul Kibbe
 Paul Lindner
 Paul Ogren
 Paul Wigley
 Paul Wright
 Paula Engelking

Paula Foreman
 Paula Quinlan
 Pederson Gift Fund
 Penelope and Rossi Snipper
 Peter Greenman
 Peter Wyckoff
 Phoebe Shelor
 Phyllis Brashler
 Prairie Fire Lady Choir
 Pramila Vasudevan
 Priscilla Thomas
 Rachael A Huener
 Rachel Breen
 Rachel Cain
 Rachel Engh
 Rachel Graff
 Rachel Levitt
 Rachel Lewine
 Rachel Reser
 Rachel Robison
 Rachel Storlie
 Rachel Thompson
 Rachel A Brown
 Randall Pottebaum
 Randi Grundahl
 Rappaport Family Foundation
 Ravi Pradhan
 Raymond Serrano
 Rebecca Benson
 Rebecca Morales
 Rebecca Pelley
 Rebecca Stibbe
 Rebecca Varone
 Rebekah Anderson
 Regents Of The University Of
 Minnesota
 Reginaldo Reyes Jeffry Lusiak
 Reid Knuttila
 Renae Youngs
 Renae Kuehl
 Renee Carey
 Renee Kidd
 Rhonda Gilbraith
 Rich Warren
 Richard Freyholtz
 Richard Remedios
 Richard Shields
 Rick Hunt
 Rick & Lisa Wheeler
 Rita Davern
 Rita Wurm
 Robert Halstead
 Robert Konetzki
 Robert Mack
 Robert Malos
 Robert Ransick
 Robert E Cudahy
 Roberta & John Becker
 Robin Bickford
 Robin Winkworth
 Robynn Denzene
 Rodney Kuhlmann
 Ron & Jacque Frazzini
 Rosanne Healey
 Rose Chu
 Rose Teng
 Rosemary & David Good

Rosenstone-Guerrero Family
 Fund
 Roxanne Miller
 Ruth Leathers
 Ruth Sturm
 Ryan Maddux
 Sally Patrick
 Sam Dauer
 Sam Stern
 Samantha Ealy
 Samuel Buffington
 Sandra Agustin
 Sandra Hricko
 Sandra Jacobs
 Sandry And Wersan Family Fund
 Sandy Fazeli
 Sara Montour Lewis
 Sara Wessling
 Sara Wilcox
 Sara Lynn Newberget
 Sara Van Norman
 Sarah Beuning
 Sarah Brennecke
 Sarah Elfering
 Sarah Fox
 Sarah Golden
 Sarah Hagstrom
 Sarah Henely
 Sarah Keuper
 Sarah Lazarewicz
 Sarah Lutman
 Sarah Marquardt
 Sarah Meister
 Sarah Miller
 Sarah Nagle
 Sarah Peters
 Sarah Richardson
 Sarah Snapp
 Sarah Wigley
 Sarah Ann Brennecke
 Savannah Reich
 Saymoukda Vongsay
 Scott Artley
 Scott Hanson
 Scott Van Wert
 Sean & Anne Byrd
 Sequoia Hauck
 Shannon Jones
 Shannon Robinson
 Sharman Kitzis
 Sharon DeMark
 Shauna Dee
 Shawn Judge
 Shawna Lee
 Shelley Shreffler
 Sherrie Fernandez-Williams
 Sieglinde Gassman
 Sieglinde Waller
 Simon Helgeson
 Solveg Peterson
 Sonia Feder-Lewis
 Stacey Berkheimer
 Stacy Rooney
 Stacy Semler
 Stacy Thiesen
 Stephanie Defrance
 Stephanie Duffy

Stephanie Haack
 Stephanie Jacobs
 Stephen Skramstad
 Stephen Wilson
 Stephen Zimmermann
 Steve Dietz
 Steve Firkins
 Steve Gass
 Steve Guttormson
 Steve Mullaney
 Steve Zimmermann
 Steven Lafrance
 Steven Soria
 Suchitra N Sairam
 Sue Nugent
 Sue Scott
 Sue Searing
 Susan Bernstein
 Susan Campion
 Susan Elsner
 Susan Gonzalez
 Susan Huhn-Bowles
 Susan Johnson
 Susan Kostka
 Susan Sattel
 Susan Snyder
 Susan Templeton
 Susan A. Weinberg
 Charitable Trust
 Susan Huhn-Bowles &
 Warren Bowles
 Susanne Bremer
 Suzanne Edwards
 Suzanne Nicolette
 Suzanne Perry
 Suzanne Swanson
 Tamara Nadel
 Tankenoff Families
 Foundation
 Tanya Gertz
 Tanya M Schmitt
 Tasu Theatre Co.
 Taylor Coffin
 Teresa Kachelmeier
 Teri Firkins
 Terri Nelson
 Terry Shima
 Tess Schlicksup
 Tessa Cunningham
 The Angells
 The Kate Wolford
 Charitable Fund
 The Minneapolis
 Foundation
 The Quiring Family Fund
 The Sarah F. Lang Fund
 The Whaley Foundation
 Theodore & Joann Swanson
 Theresa Beckhusen
 Theresa Sweetland
 Theresa Youngblom
 Thierry Ajas
 Thomas Crouse
 Thomas Spainhour
 Thomas P. Ducker &
 Suzanne J. Ducker
 Thomas R Loftus

Tib Shaw
 Tiffani Johnstone
 Tim Kidder
 Timothy Holst
 Tina North
 Tina Frederickson & Don Eitel
 Tink Urick
 Todd Clasen
 Todd Hauschildt
 Todd Reemtsma
 Todd Steigerwald
 Tom Garneau
 Tom Pfannenstiel
 Tracey Deutsch
 Tricia Van Ee Molbert
 Trillium Foundation
 Trisha Collopy
 Tyler Olsen-Highness
 Ute Bertog
 Valerie Meyer
 Vernice Carter
 Veronica Ruggles
 Vicki Duhr
 Vicki Smith
 Vickie Benson
 Victoria Lauing
 Vincent King
 Vineet Shrivastava
 Warren Bowles
 Wayne Kuehl
 William Delaney
 Willie Gregg
 Zachary Kutil
 Zhac Rahkonen
 Zlato Fagundes
 Zoe Benston
 Zoffer and MacNaughton Charitable Fund





CAPITAL CAMPAIGN DONORS

May 2018 to December 31, 2021

ORGANIZATIONAL DONORS



**KNIGHT
FOUNDATION**



**BUSH
FOUNDATION**

 **SAINT PAUL
& MINNESOTA
FOUNDATIONS**

THE MCKNIGHT FOUNDATION



ECOLAB®

 **Mellon
Foundation**



**NATIONAL
ENDOWMENT for the ARTS**
arts.gov



foundation

thrivent®

Heart of America.

GIVING COMMUNITIES
SPACE TO GROW

F. R. BIGELOW FOUNDATION

Rosemary and David
Good
Family Foundation




**OLD NATIONAL BANK®
FOUNDATION**

 **DELUXE**

HUGH J. ANDERSEN FOUNDATION

Trillium Family Foundation

LISC
TWIN CITIES



ST PAUL
AREA CHAMBER



INDIVIDUAL DONORS

8 Bridges Workshop
Afton Benson
Alex Chadwell
Alice Adams
Amelia Brown
Andriana Abariotes
Anne Jin Soo & Mark Preston
Anonymous
Ashley Hanson
Barbara Gerten
Ben, Alix, Etta & Oskar Aase
Bill and Susan Sands
Bo Thao Urabe
Bob & M.J. Bauer

Bob Malos
Bonni Allen
Buddy Scroggins and Kelly
Schroeder Fund
Caly McMorrow
Carl Atiya Swanson
Caroline Taiwo
Catherine Lundoff
Christina Martinez
Claire & Sam LaChance
Colleen Powers
Craig Dunn
Curt MacKenzie & Timm Caven
D. Jinza Thayer

Dana Mortenson
Dana Nelson
David & Leni Moore
Dominic Facio
Elana Schwartzman
Elizabeth Larsen & Walter
Schleisman
Elizabeth McCambridge
Emily Percy
Ernest and Sarah Lehmann Family
Fund
Familia Reyes Bauer - Omar,
Greta, Niko, y Xavi
Ginger Wilhelmi

Gray Plant Mooty Foundation
Heart & Soul Drum Academy
Helmuth & Johnson Attorneys at Law
Holly Sidford
James & Geraldine Pettitt
James A. Payne Fund
James Marshall
Jamie Schumacher & Nicholas Johnson
Janey Winterbauer
Jason Allen
Jason Schupbach & Robert Brier
Jay & Page Knudsen Cowles
Jen Alstad
Jennifer Eckes
Jeremiah Gardner
Jeremy & Michael Cohen-Elyanow
Jerome, Danielle, JP, & Taylor Rawls
Jes Reyes
Jim Rustad & Kay Thomas
John Bell & Alanna Nissen
John Laravuso
Johniver Family Charitable Fund
Johnson & Iverson
Jonathan Reynolds
Jonathan Rozenbergs
Josh Bindewald
Judith Hunt
Julie Greenberg
Julie Roles
Jun-Li Wang & David Davies
Karla Larsen
Karuna Fund
Kate & Roger Barr
Kate Wolford
Katherine Lucas
Kathy Mouacheupao
Katie Ka Vang
Kaywin Feldman & James Lutz
Kelly Asche & Christine Rooney
Kristin Whitson

Kristina Hess
Laura Zabel, Levi & Irene Weinlagen
Lee Zukor & Laura Zimmermann
Linda Essig
Lisa Middag & Tony Nelson
Liz McCambridge
Luke Swanger, Adia Morris Swanger & Émile
Lutman & Associates, LLC
Marla Ordway
Mary Kay & Robert Zabel
Matthew Fluharty
Michael Bahl
Michael Orth
Mike LaFave
Molly Chase
Monica Allen
Nancy XiáoRong Valentine
Nikki Hunt
Noah Keesecker
Noel & Theresa Nix
Nora Riemenschneider
Omari Rush
Paul & Susan Schuster
Paula DeCosse
Phil & Paula Mason
Rachel Fulkerson
Rita and Robert Schunicht Davern
Rosanne & Mark Swanson
Rossi & Penelope Snipper
Sacred Harp
Sally Sand
Sarina Otaibi
Shannon Pettitt
Sharolyn Hagen
Sheila Smith & Perry McGowan
Stephanie Arado
Susan Campion
Susan Schuster
The Bonestroo Family
The Carleen Rhodes Fund
The Diane M. Berthel Charitable

Fund
The Haney Moore Family
The Justin and Susan Kelly Foundation
The Pilots
The Reedy Family
The Takeshita Family
Theodore & JoAnn Swanson
Tom Pfannenstiel
Trish DeAnda Kivett
Va-Megn Thoj
Yvonne Clinton
Zabel Acres

***Special thanks
to 4RM+ULA,
Flannery
Construction,
Mercury Mosaics,
Christie Coffin, and
Yung-Ling Chen.***

IMAGE AND ARTWORK CREDITS

FRONT COVER

Fergus Falls office, photo by Eric Santwire.
Saint Paul office, photo by Laura Zabel.

Introduction, pages 1-2
Saint Paul office, photo by Morgan Scheff.
Strategic Plan illustrations by Heather C. Lou.

CRISIS RESPONSE, PAGES 3-4

Artists Respond: Combating Social Isolation performance by Summit Music TC, photo by Uche Iroegbu.
Artists Respond: On Plywood community painting at Springboard, photo by Uche Iroegbu.

CRISIS RESPONSE, PAGES 5-6

Artists Respond: On Plywood community painting on University Avenue, photo by Uche Iroegbu.
Artist Ta-coumba Aiken at Artists Respond: On Plywood, photo by Uche Iroegbu.
Ua Si Creative at Artists Respond: On Plywood, photo by Uche Iroegbu.
Nancy XiǎoRong Valentine presents “The Audacity to be Asian in Rural America: we owe you no apologies,” part of Artists Respond: Equitable Rural Futures, photo by Eric Santwire.
Artists Respond: People, Place, and Prosperity coloring book illustration by Briauna Williams.
Healing Hands installation by Ifrah Mansour at the People’s Center, photo by Bruce Silcox.

NATIONAL MODELS, PAGES 7-8

Saturdays at Springboard: How We Steward, curated by Aki Shibata featuring Kalpulli Yaocenoxtli, photo by Destiny Roberts.
La Luchadora screenprinting cart, photo by Bruce Silcox.
Work of Art: Business Skills for Artists and Handbook for Artists Working in Community design and illustration by Cori Nakamura Lin.

NATIONAL MODELS, PAGES 11-12

Saturdays at Springboard: How We Imagine, curated by TruArtSpeaks featuring Tish Jones, photo by Destiny Roberts.
Saturdays at Springboard: How We Imagine, curated by TruArtSpeaks, photo by Destiny Roberts.

NATIONAL MODELS, PAGES 13-14

2019 Rural Arts & Culture Summit opening plenary featuring musician Annie Humphrey, photo by Holly Diestler.
Amber Buckanaga fashion show at the 2019 Rural Arts & Culture Summit, photo by Holly Diestler.
Rural Regenerator Fellow retreat, photo by Michele Anderson.
Rural Regenerator Fellow group picture, photo by Michele Anderson.
Rural Regenerator Fellows at the Precious Plastics Lab, photo by Domnic Facio.

A NEW NEIGHBORHOOD HOME IN SAINT PAUL, PAGES 15–16

Saint Paul office, photo by Destiny Davison.

Ribbon-cutting at the Grand Opening Celebration in Saint Paul, photo by Destiny Roberts.

Robot Dance Floor by Nick Knutson at the Grand Opening Celebration in Saint Paul, photo by Destiny Roberts.

Water cistern with mural by Aleksandra Gurneau, part of *Refraction*, by Ua Si Creative at the Saint Paul office, photo by Destiny Davison.

Heart & Soul Drum Academy at the Grand Opening Celebration in Saint Paul, photo by Destiny Roberts.

Lady Midnight at the Grand Opening Celebration in Saint Paul, photo by Destiny Roberts.

Nibi (Water) Walk led by Sharon M. Day, part of *Refraction*, by Ua Si Creative at the Saint Paul office, photo by Destiny Davison.

OTHER PROGRAMS & OFFERINGS, PAGES 17–18

Ready Made photo illustration by Destiny Davison.

Precious Plastics Lab creation, photo by Michele Anderson.

Ready Go's Mobile Sign Shop in action, photo by Peter Haakon Thompson.

Saturdays at Springboard: How We Heal, curated by DejaJoelle, photo by TJ Lor/JUAL Visuals.

All For One mural by Michael Cimino, part of Artists on Main Street in Mankato, photo by Visit Mankato.

Raven Cries Out, by Sam Zimmerman, part of Community Supported Art 2022.

PARTICIPATING ARTISTS, PAGES 23–24

"Artist" illustration by Cori Nakamura Lin from the *Handbook for Artists Working in Community*.

PARTICIPATING ARTISTS, PAGES 27–28

Visitors to "*Time Sensitive*," an installation facilitated by Hinge Artist Elyse-Krista Mische, photo by Eric Santwire.

Love Makes the World Go Round sculpture by Suzanne and Mark Daehlin for Artists on Main Street in Northfield, photo by Northfield Downtown Development Corporation.

Ready Go's Paper Plains mobile art project in action, photo by Michele Anderson.

FY20 & FY21 DONORS, PAGES 31–32

Sunflower illustration by Asahi Nagata.

EMERGENCY RELIEF FUND DONORS, PAGES 33–34

Workbook illustration by Cori Nakamura Lin.

Art Supplies illustration by Destiny Davison.

EMERGENCY RELIEF FUND DONORS, PAGES 35–36

Springboard for the Arts illustration by Destiny Davison.

Arty Mouse illustration by Asahi Nagata.

EMERGENCY RELIEF FUND DONORS, PAGES 37–38

Reading Bunny illustration by Magdalena Mora.

Robot Dance Floor by Nick Knutson at the Grand Opening Celebration in Saint Paul, photo by Destiny Roberts.

BACK COVER

Saturdays at Springboard: How We Build, curated by Arts-Us, photo by Destiny Roberts.



SAINT PAUL

262 UNIVERSITY AVE WEST
MINNEAPOLIS, MN, 55301

FERGUS FALLS

201 LINCOLN AVE
FERGUS FALLS, MN, 56537

[SPRINGBOARDFORTHEARTS.ORG](http://springboardforthearts.org)
[@SPRINGBOARDARTS](https://www.instagram.com/springboardarts)

